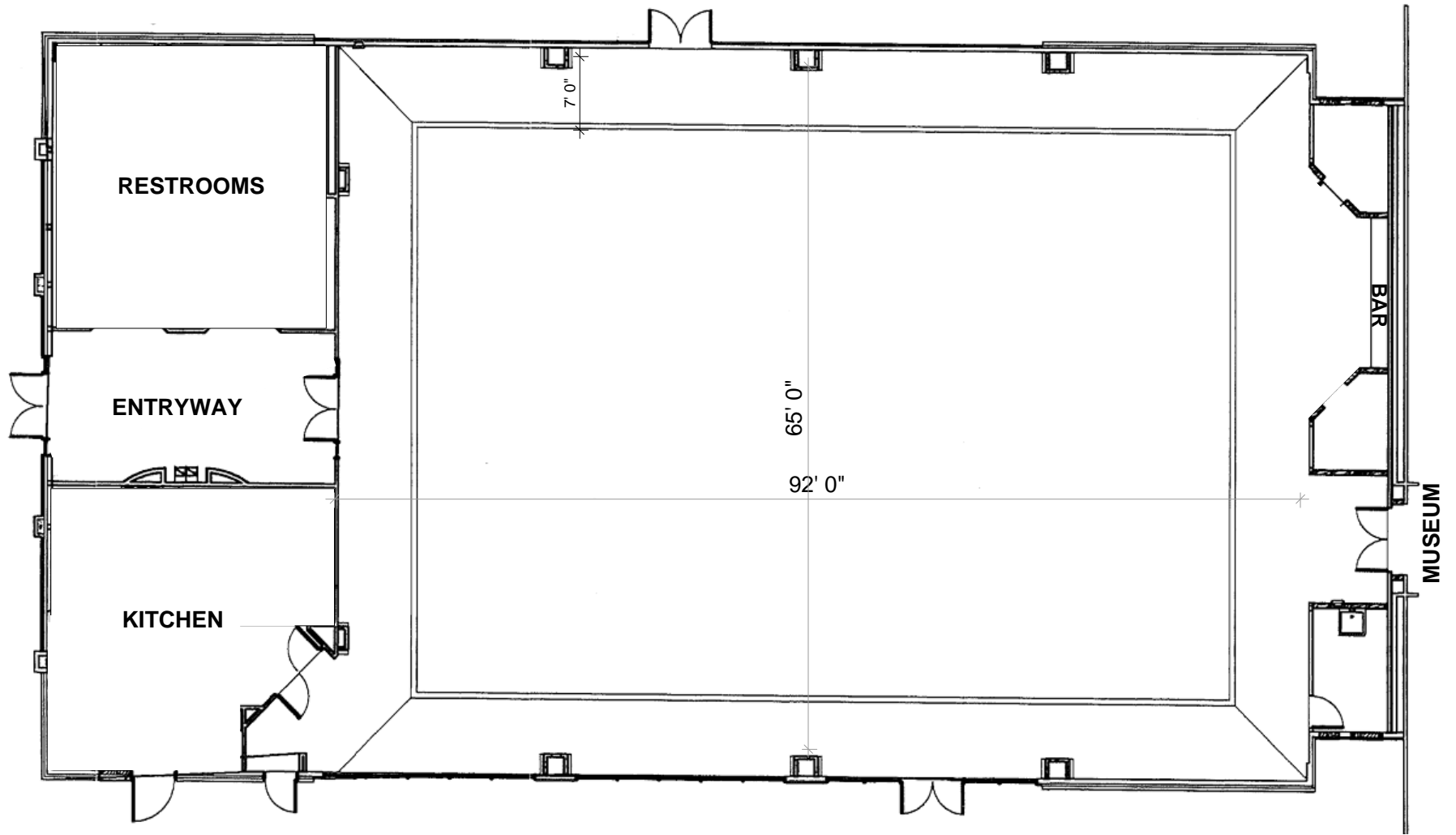


**Banquet Hall Floorplan**

**John Knox  
Texas Ranger Memorial  
Banquet Center**



**RIVER SIDE**

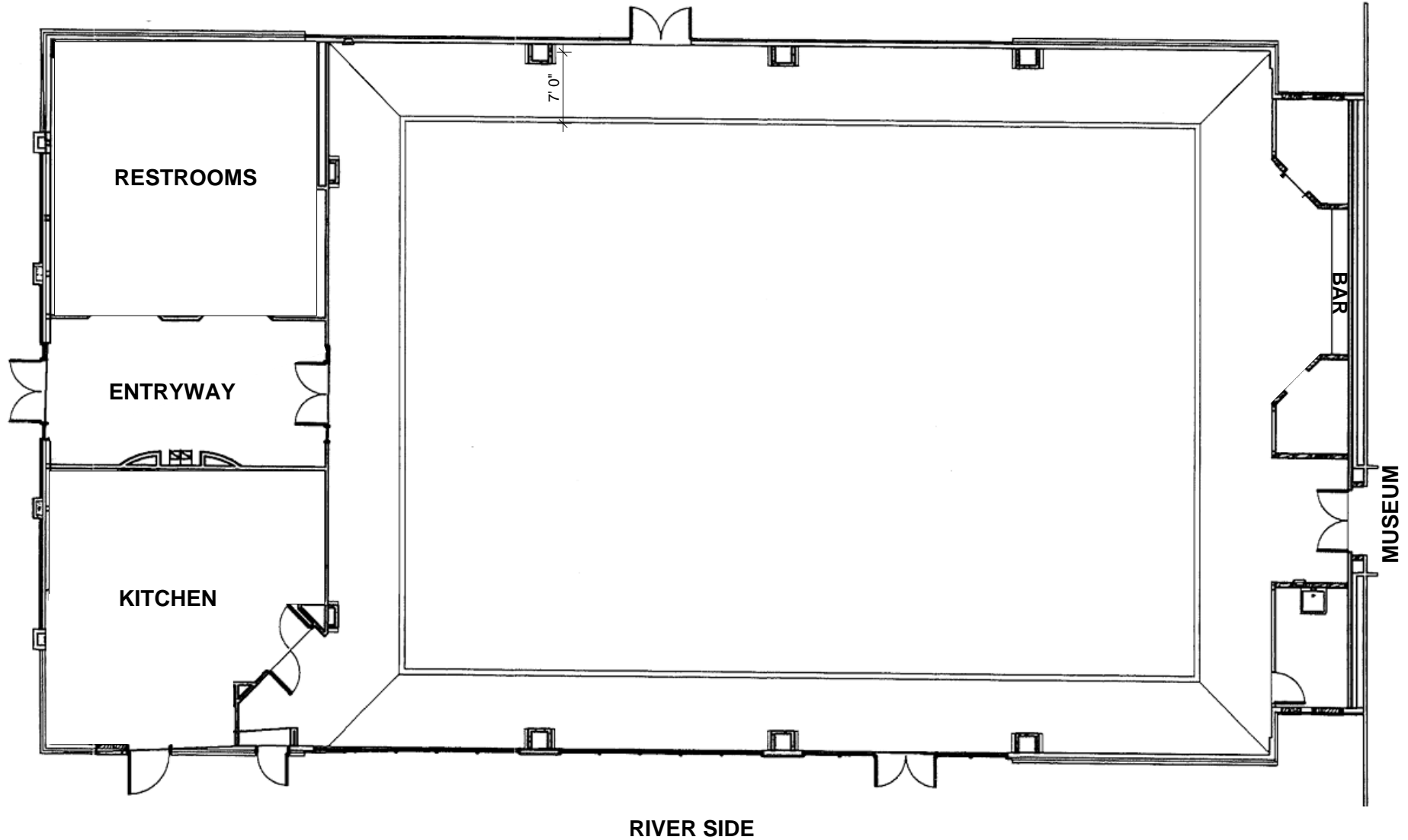
\* Diagram due two weeks prior to event as indicated on your Rental Agreement, Item #43.

\* Indicate location of all equipment rented from Knox Center - including tables, chairs, and any applicable audio-visual equipment.

\* We assume all tables include seating for 8 (with 8 chairs) unless otherwise indicated.

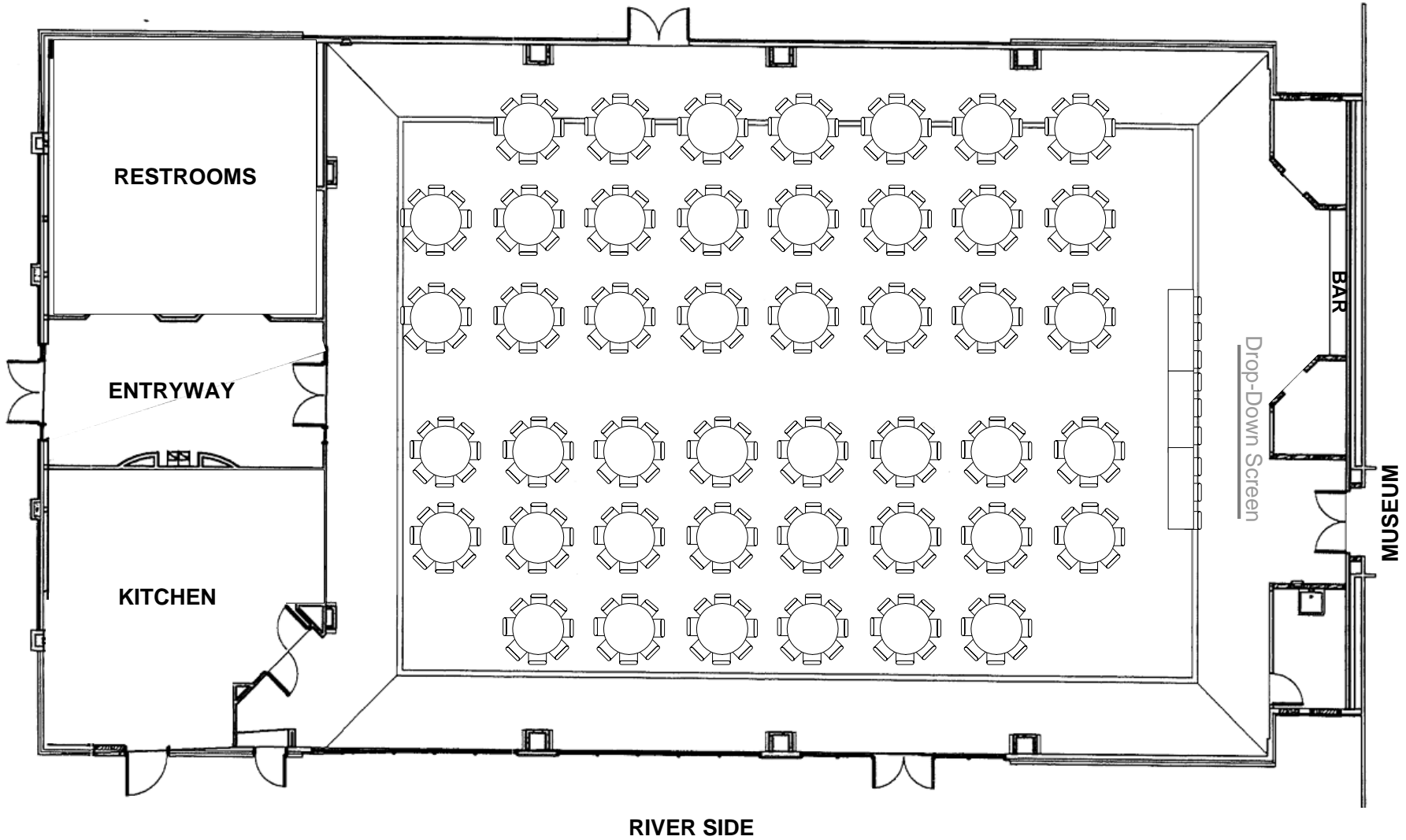
John Knox  
Texas Ranger Memorial  
Banquet Center

Banquet Hall Floorplan



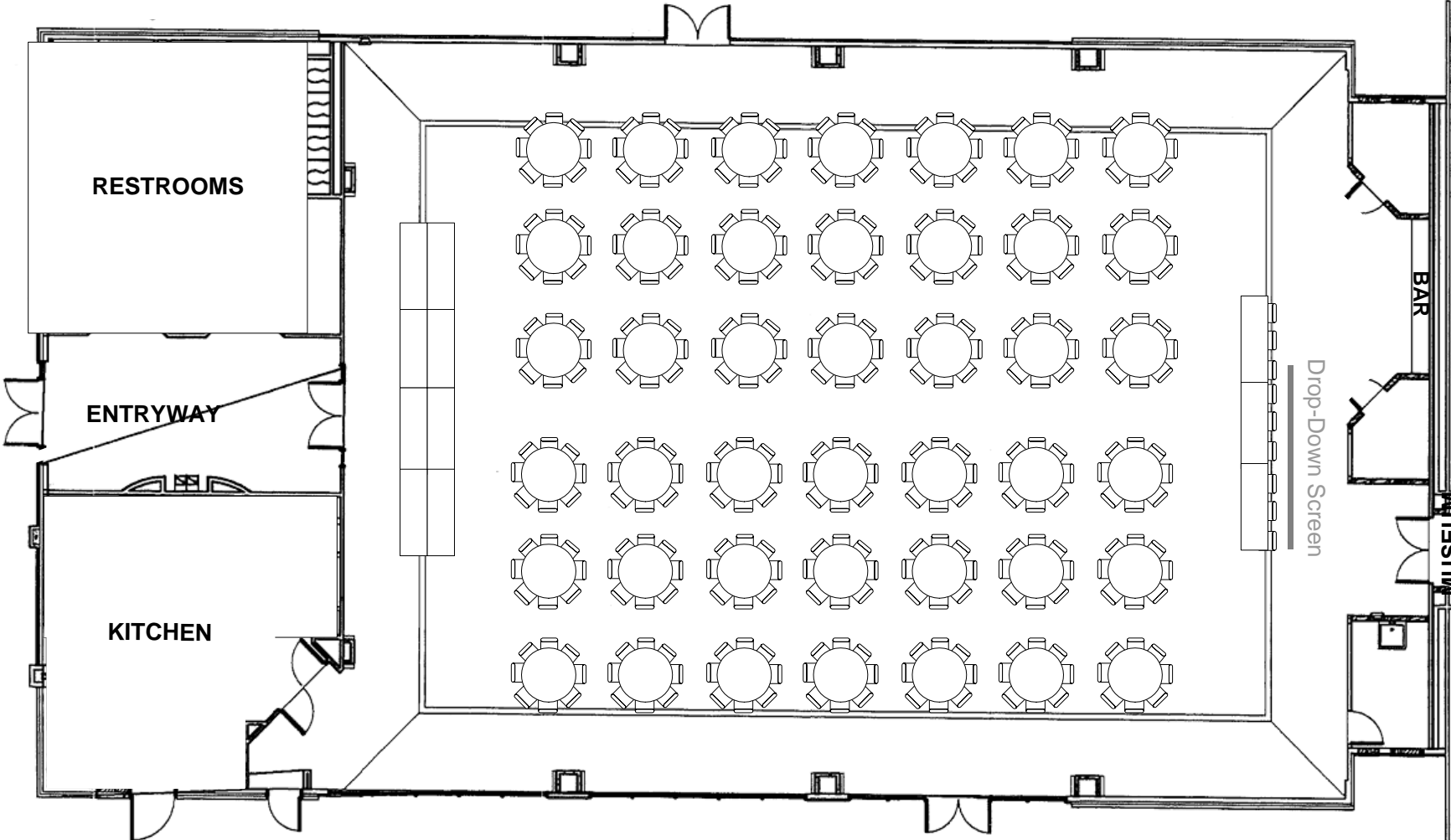
**Waiter Service Example**  
**Service from Kitchen**  
**for 360 Persons 45 Round**  
**with Aisle and 9 at Head**  
**Tables**

# John Knox Texas Ranger Memorial Banquet Center



**Buffet Line Example**  
for 345 Persons 2 Round Tables  
with 9 at Head Table  
32' Double Serving Line  
and 5' Aisles

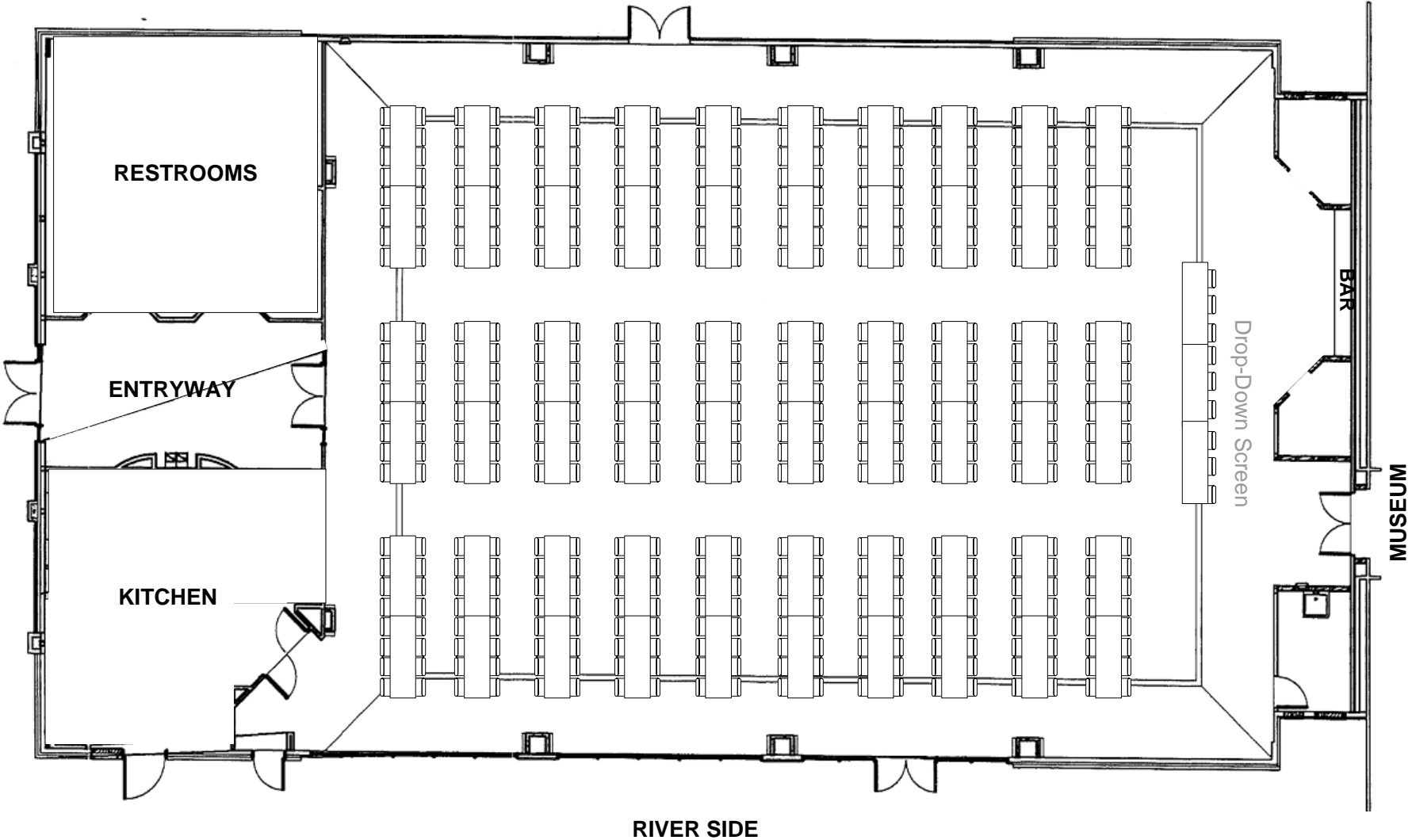
**John Knox  
Texas Ranger Memorial  
Banquet Center**



**RIVER SIDE**

**Waiter Service Example**  
**for 480 Persons with**  
**9 at Head Table**

**John Knox**  
**Texas Ranger Memorial**  
**Banquet Center**



**Buffet Line Example  
for 512 Persons with  
9 at Head Table**

# John Knox Texas Ranger Memorial Banquet Center

